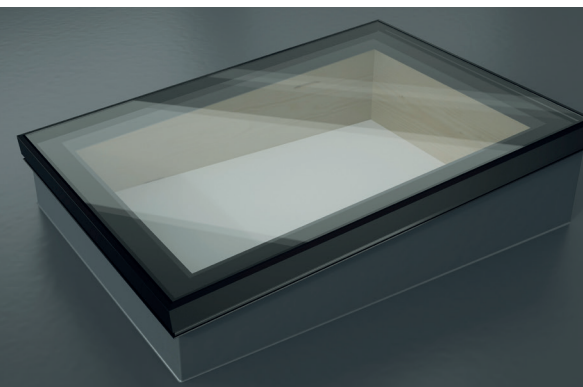


1



Run a continuous bead of sealant around the perimeter of the kerb for the frame to sit on.
(Recommended kerb slope minimum 5 degree pitch)

2



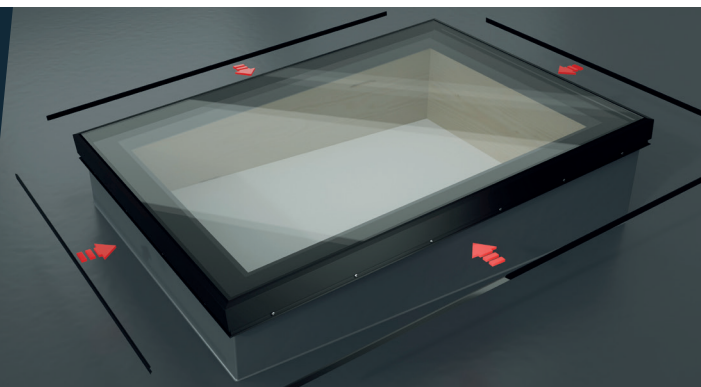
Position the flat rooflight onto the kerb, making sure it's central to achieve an even distance around the kerb.
(Recommended kerb width 80mm)

3



Screw the rooflight onto the kerb using appropriate fixings through the pre-drilled fixing holes.

4



Fit the cover trims around the perimeter with a rubber hammer to hide the fixing screws.

LEARN MORE

For a no obligation quotation, call **01453 826884**
or email sales@atlas-aluminium.co.uk
www.atlas-aluminium.co.uk

www.atlas-aluminium.co.uk

The information provided in this publication is provided "as is" on February 2024. Atlas Aluminium may modify and change the information and specifications from time to time for a variety of reasons, without prior notice and updates will not be issued automatically. Due to the limitations of the processes of printing or digital display of colours, no liability can be accepted for the accuracy, they are intended as guidance only. This information is not intended to have any legal effect, whether by the way of advice, representation or warranty (express or implied). All rights reserved. Copyright in this publication belongs to Atlas Roofing and all such copyright may not be used, sold, copied or reproduced in whole or part in any manner in any media to any person without prior consent. Copyright © 2024 Atlas Aluminium All rights reserved.